

Take **Part** at **Embrace Arts**



Spark Children's Puppetry Company starts March 2013!



Spring 2013 Newsletter

□ Welcome back to our exciting cultural learning programme for children and young people at **Embrace Arts**!

We are the **University of Leicester's arts centre and open to all**, with a diverse programme of activities, sessions and opportunities for schools and groups to engage with in our arts studios and performance spaces in the heart of Leicester.

Our fabulous cultural learning programme for this season features:

January - March

- **Turned on its Head** monthly creative movement sessions for disabled children and their families

February

- Climb aboard **The Flying Machine** with Handmade Theatre – interactive performances perfect for schools and groups
- Launch of our **Young People's Advisory Board**!
- **Leicester Roots!** We celebrate and explore the roots of hip-hop in Leicester with a variety of workshops and celebrations
- **RADA's Access to Acting** course launches for young people aged 18 – 26 years, particularly those with physical / sensory impairments, with four days free training

March

- **Spark Children's Puppetry Company**; a three day fun-fest of puppetry skills!

April

- **Bamboozle Theatre's Light as A Feather** adapted for a full day **Short Arts Break**, specifically for children with complex disabilities.

For more information and to book, please contact Education and Outreach Officer Marianne Pape on arts-education@le.ac.uk or call 0116 252 3037



Supported using public funding by

**ARTS COUNCIL
ENGLAND**

The University of Leicester's arts centre – open to all

Book
now!

HandMade Theatre presents: **The Flying Machine**

"Welcome aboard the flying machine and get ready for a wondrous adventure"

The Flying Machine is a totally immersive theatrical experience for young people. The workshops encourage young people to develop their communication, imagination; problem solving and role play skills and of course have lots and lots of fun!



Young people can directly interact with the flying machine installation, manipulating leavers, buttons and doors, flapping the wings or raising the flag. Actors and musicians facilitate the space using songs, activities and props to explore new ideas and stories but the emphasis is on the young people to determine and create much of the action. Participants have the opportunity to visit places across any time or space and engage with an array of tactile props and resources stored in the set walls

Suitable for children age 4 – 9 and for those with special educational needs to 19 years old

Duration: 45 minutes. **Times:** 10am; 11.15am; 1pm and 2pm

Dates: Groups 20th – 22 February 2013; **Public performances on 23rd February 2013**

Maximum of 30 participants per show including adults. **Cost:** £3.75 per child, teachers free

'Fantastic imagination a great way to re-think engagement in learning' Rosehill Schools conference

☐ **Bronze Youth Arts Award success**

Ten year 11 students from Ellesmere SEN College have passed their Bronze Youth Arts Awards, supported by Embrace Arts and Dance 4. They worked with us to organise their own Dance Day at Embrace Arts, learning all the skills needed to produce an event for their year 7 peers.



"Thank you for today – it was just FANTASTIC! It worked really well on so many levels; the leadership and empowerment of the Year 10 students to run the event; the enthusiasm and enjoyment of the year 7s; the atmosphere and sense of fun for everyone; the inspirational performance from Studio 79!"

S. Coopey – Head of PE at Ellesmere College

We offer **discount tickets** for the **go and see** sections of the arts award, and meet artists at our exhibitions and residencies for free. See our **What's on guide** for a list of events.

Find out more about the arts award here: www.artsaward.org.uk

Apprentice news...

Our Community Arts Administration Apprentice, Claire Tidmarsh is creating our **Young People's Advisory board**, for young people aged 14 – 19 and disabled young people aged 14 – 26 which launches on 23 February, 2 – 4.30pm. This includes 2 free tickets to The Flying Machine. It's a great opportunity for young people to discover more about the arts and organise events and feed into the programming at Embrace Arts.

To join the group and to find out more email arts-education@le.ac.uk

☐ Turned on its Head

"The session adapts to each child, it's just so much fun, sometimes energetic, sometimes calm - whatever the child wants really." Participating parent

These magical movement sessions bring an inclusive approach to dance by enabling families with disabled children to explore movement and take part together at Embrace Arts on Sundays once a month.

Our experienced and supportive dance artists Liz Clark and Oksana Tyminska tailor activities to enable everyone to take part, have fun and get creative!

- **Dates: 27 January, 24 February and 17 March 2013**
- **Times: 2pm – 3pm: fun and physical, and autism friendly session**
3.15 – 5pm: reflective and sensory, for children with complex disabilities
- **£5 per child per session, accompanying adults free**
- **To book call 0116 252 2455 or visit www.embracearts.co.uk**



☐ Leicester Roots!



Kindly supported by the Heritage Lottery Fund and in partnership with local artists and arts organisations, we are celebrating and exploring the roots of hip hop in Leicester with young people across the city.

Sessions will focus on the 4 strands of hip hop: music, dance, words and graffiti arts, and will enable young people to create new work and explore the heritage of these artforms in Leicester.

To find out more and sign up to the workshops, contact arts-education@le.ac.uk

☐ RADA: Access to Acting

7 – 10 February, 10am – 5pm FREE

The Royal Academy of Dramatic Arts (RADA) comes to Embrace Arts in February with a 4-day course for young people aged 18-26, particularly those with physical and / or sensory impairments, who have a keen interest in the performing arts and hope to continue to drama school or to enhance and further their skills. Participants will fine tune their abilities and gain confidence during their time here, while meeting people with similar interests.

Places are limited, to book contact 0116 252 3037 / arts-education@le.ac.uk

RADA

ROYAL
ACADEMY OF
DRAMATIC ART

☐ Children in Care choir

Embrace Arts are pleased to support Leicestershire's CiC choir, as our young choir in residence. Led by Catriona Candler the choir members are currently aged from 8 - 17 years and have recently performed at the tenth annual Celebration of Achievement evening.

For more information about the choir please contact Catriona Candler at Catriona.Candler@leics.gov.uk

The University of Leicester's arts centre – open to all

□ Short (arts) Breaks

Bamboozle Theatre return to Embrace Arts on 4 April for a full day adaptation of their 'Light as a Feather' show tailored for children with PMLD.

To find out more and to register your interest, email arts-education@le.ac.uk

Extra-Ordinary Workshop

David Toole and Lucy Hind

17 May 2013, 11am – 12pm

A unique opportunity to meet and work with David Toole, prior to their evening performance of Extra-Ordinary at Embrace Arts.

Fresh from the Paralympic opening ceremony, David Toole will be sharing skills and techniques to develop your own unique way of dancing.

Only 1 workshop is available. Suitable for KS4+

Please contact Marianne Pape for more information on 0116 252 3037 arts-education@le.ac.uk and visit www.embracearts.co.uk



Teachers Continuing Professional Development

- complimentary tickets to key productions
- invitations to artists talks and exhibition previews
- Art form development sessions
- Opportunities to network with other teachers, artists and arts agencies.

Find out more from Marianne Pape on 0116 252 3037

Nottingham Playhouse presents:

□ **White Peacock, by Gill Brigg**

White Peacock tells the story of a young boy, Sam, and a girl he meets called Phoebe and the mystery of the white peacock. Explore the garden, with real grass and soil to touch, a pond to dip feet in, a tree to lie under and flowers to smell.

Discover hidden objects and memories with Sam and Phoebe.

White Peacock is a magical 50-minute play with sensory interaction, for six learning disabled and autistic young people aged 11 and above, each supported by a companion. Performances take place inside a specially constructed micro-theatre, where the audience can experience the play in a safe, contained space from which they can easily take time out if they wish to.

There is a celebration, with music and dancing; the audience is given instruments and invited to join in.

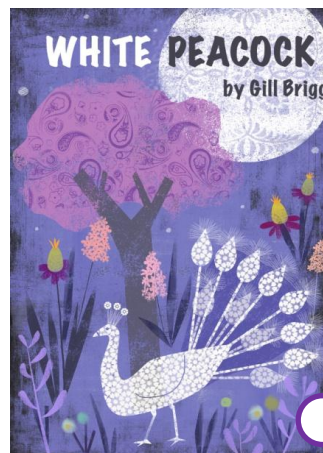
Suitable for: Young people aged 11 years and above only, with profound and multiple learning disabilities and autism.

Dates: Thursday 6 June 2013 : 1 group performance. **Duration:** 50 minutes
Friday 7 June 2013 : 3 group performances

Cost: Free to groups of 6 young people with PMLD and their assistants.

To book, contact Marianne Pape on 0116 252 3037 / arts-education@le.ac.uk

Kindly supported by Arts Council England and Leicester City Council Disabled Children's Services.



Marianne Pape / Claire Tidmarsh, Education and Outreach Team

Embrace Arts, Richard Attenborough Centre, Lancaster Road, Leicester, LE1 7HA

0116 252 3037 / arts-education@le.ac.uk